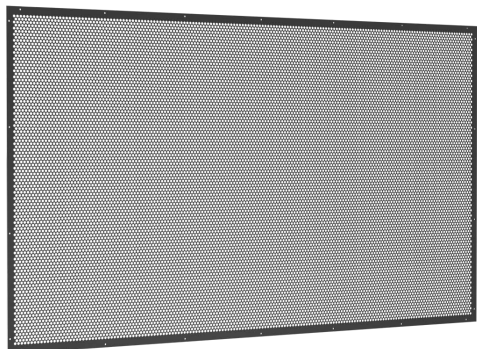


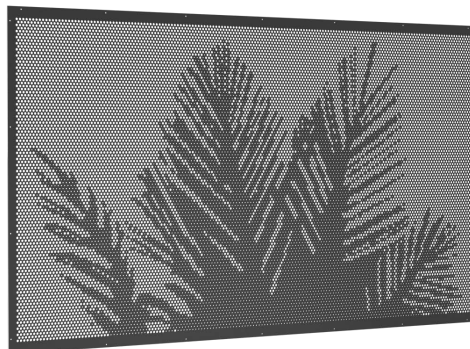
PERFORATED POOL FENCE FULL OR DECORATIVE INFILL PANEL PREMIUM PERF OUTER FRAME

FABRICATION OVERVIEW

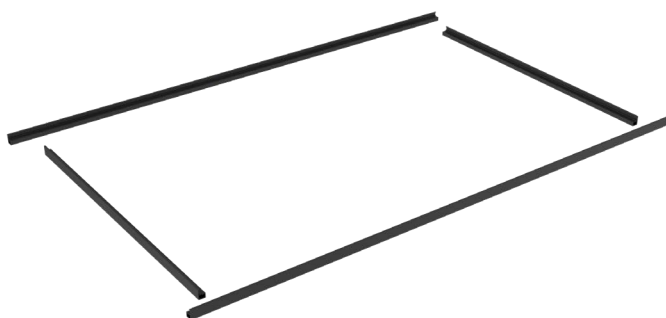


Premium Perf FULL infill panel

OR



Premium Perf DECO infill panel

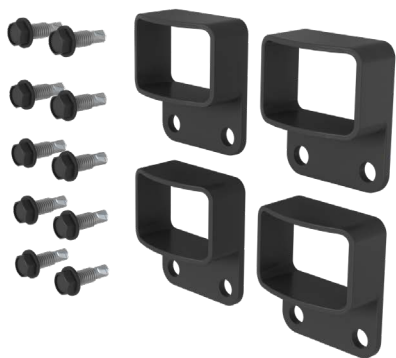


Premium Perf outer frame



Wafer screws

METHOD 1:



Horizontal Brackets

METHOD 2:



U Channels

Installation Method Overview

METHOD 1: Horizontal Bracket Installation



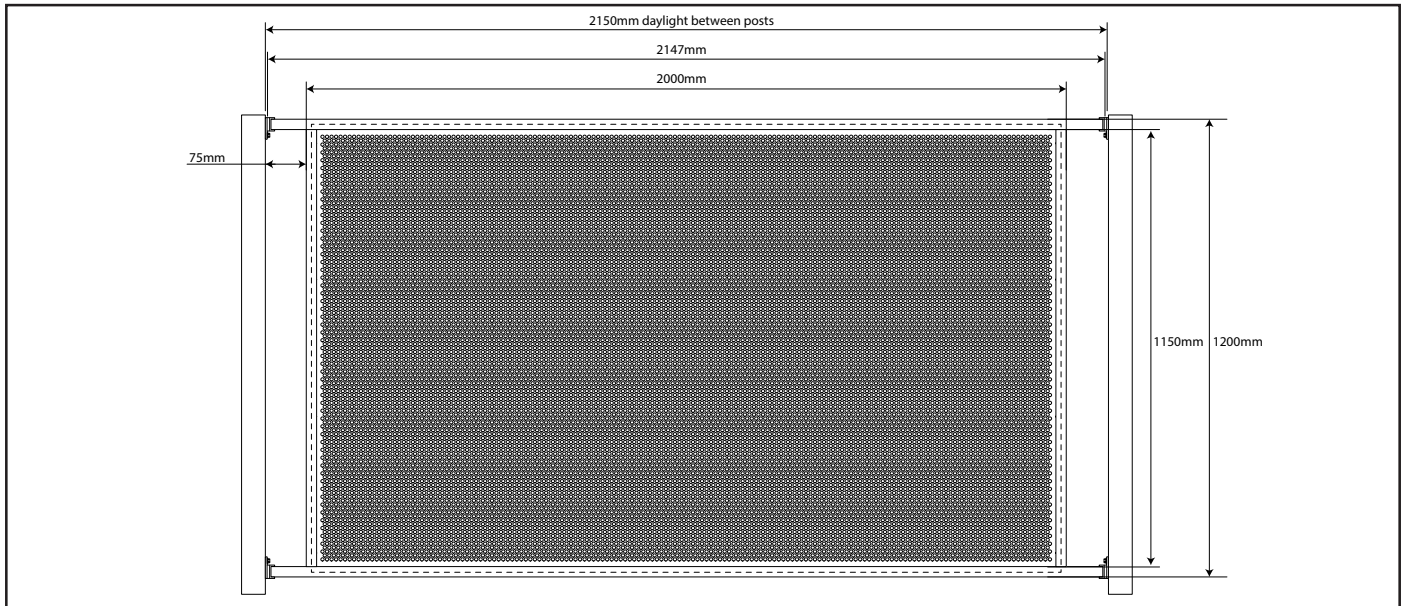
METHOD 2: U Channel Installation



METHOD 1

Premium Perf Pool Barrier Installation - Bracket Fit

Based on framed panel size 1200mm H x 2000mm W



NOTE

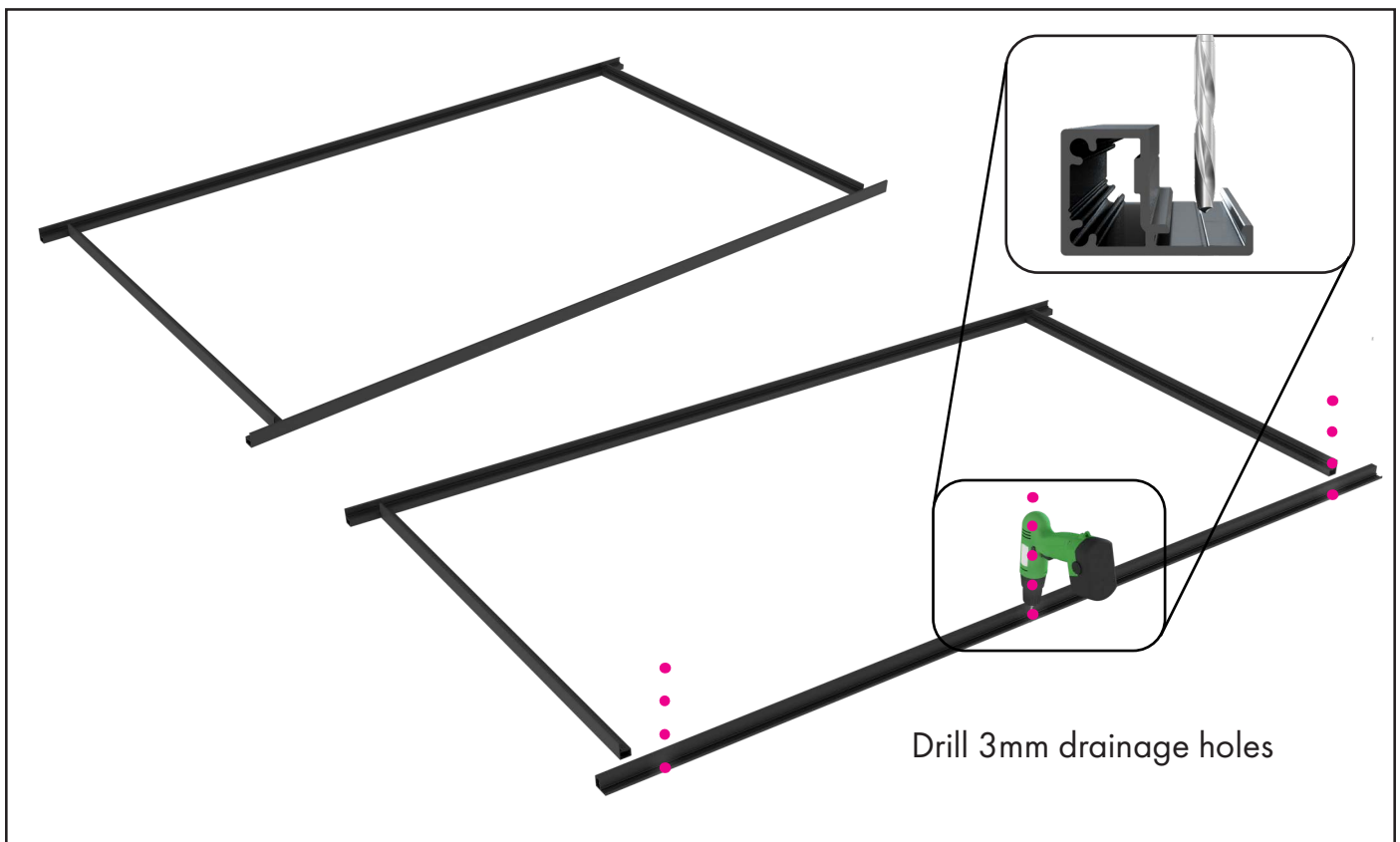
Assembled panels are standard at 2000mm wide x 1200mm high

As standard, horizontal rails are supplied at 2147mm which provides 75mm 'gap' at each side. If altering, the minimum gap allowance is 35mm to allow for Horizontal Brackets.

As standard, vertical panels stiles are supplied at 1149mm.

'Daylight' between posts for standard installation is 2150mm.

For height and width adjustment, refer Appendix 1.

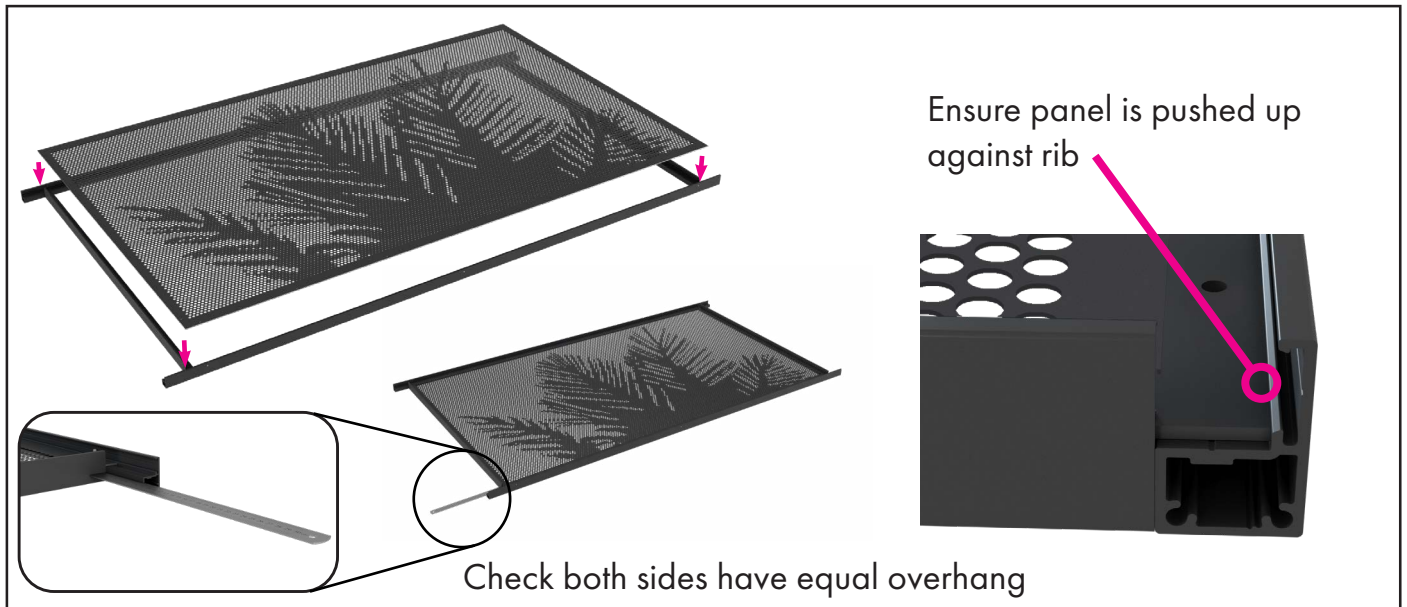


Drill 3mm drainage holes

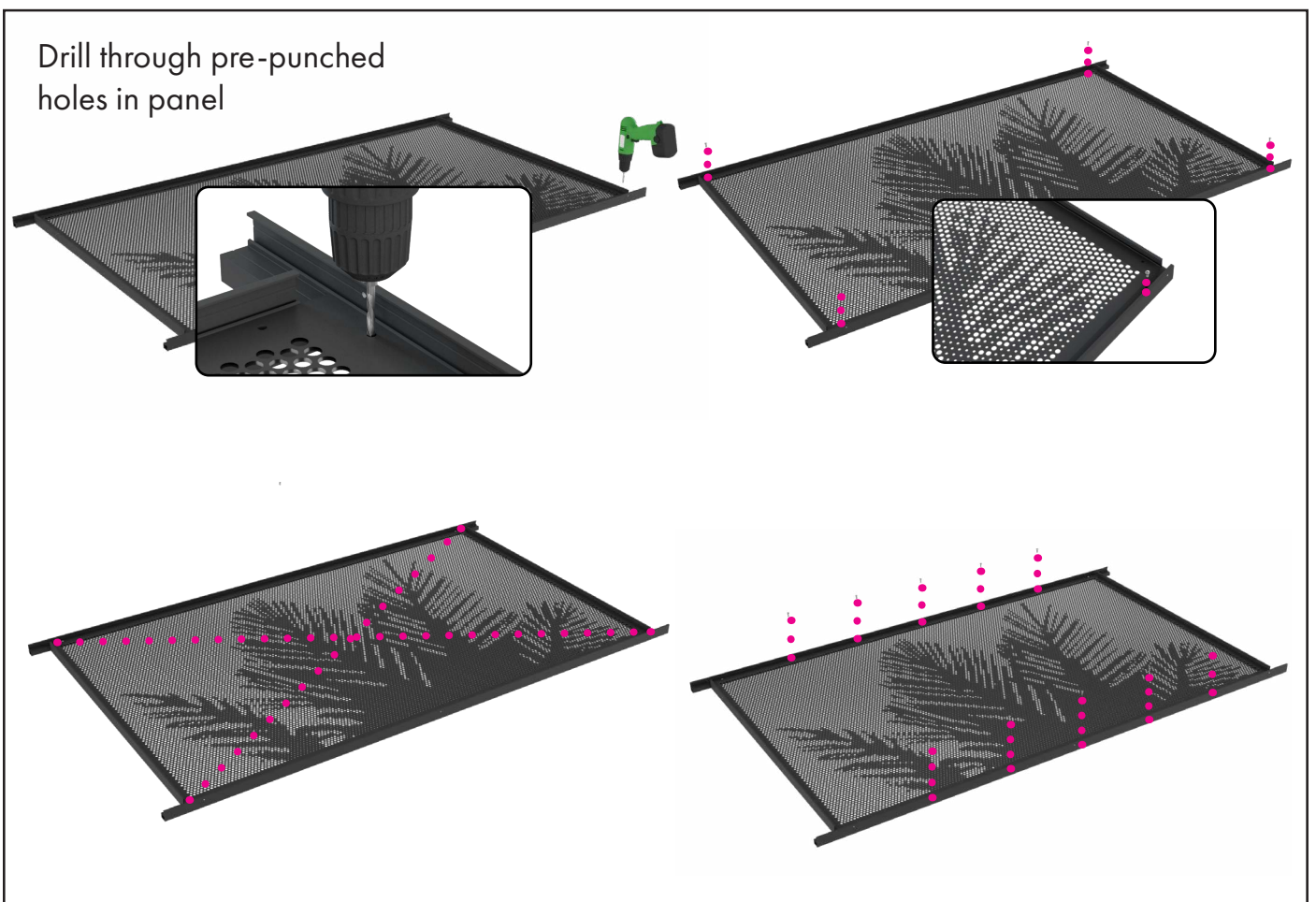
1

Lay out rails in picture frame (side rails inside top/bottom rails).

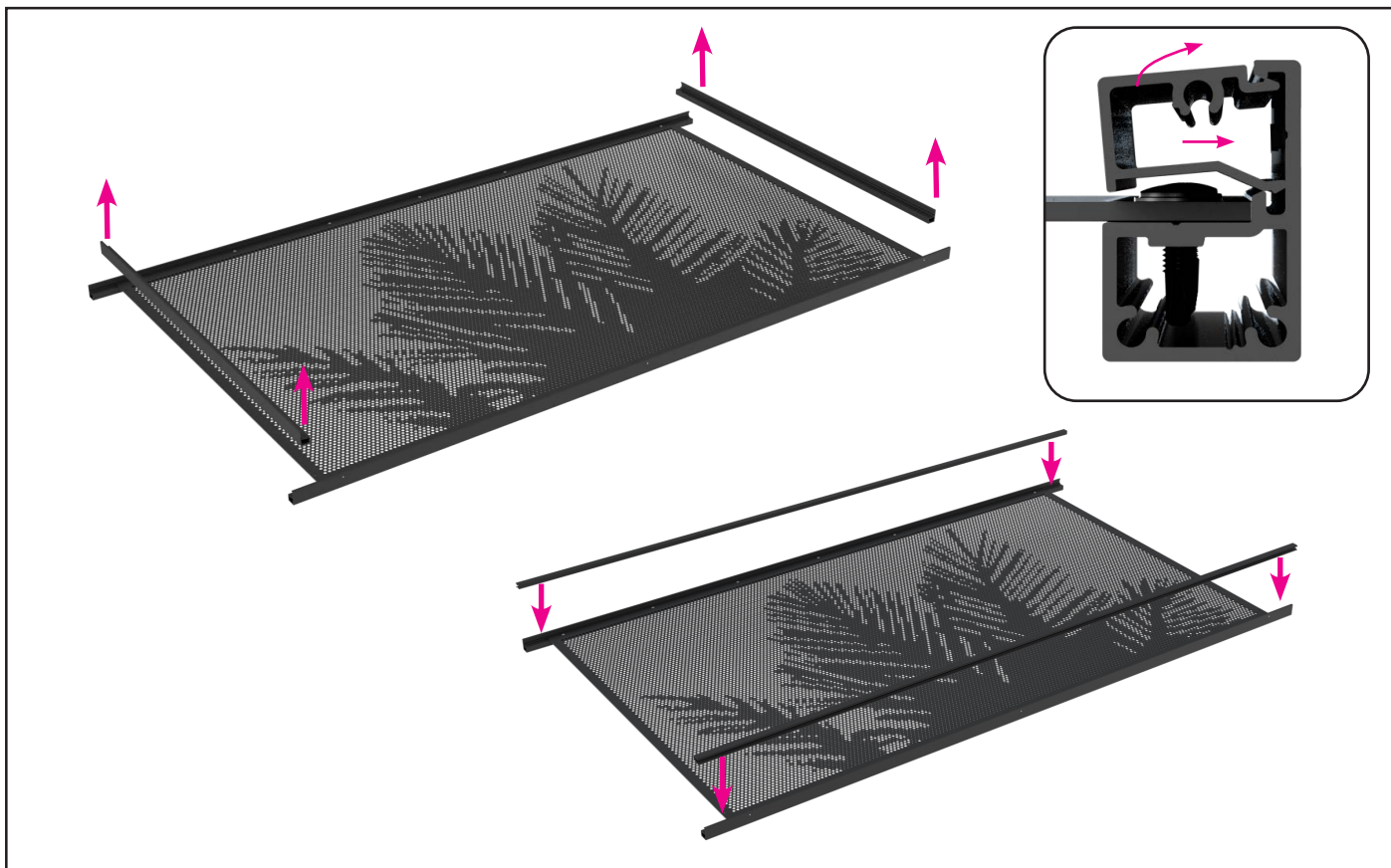
Drill 3mm drainage holes in bottom rail at 2 ends and midpoint



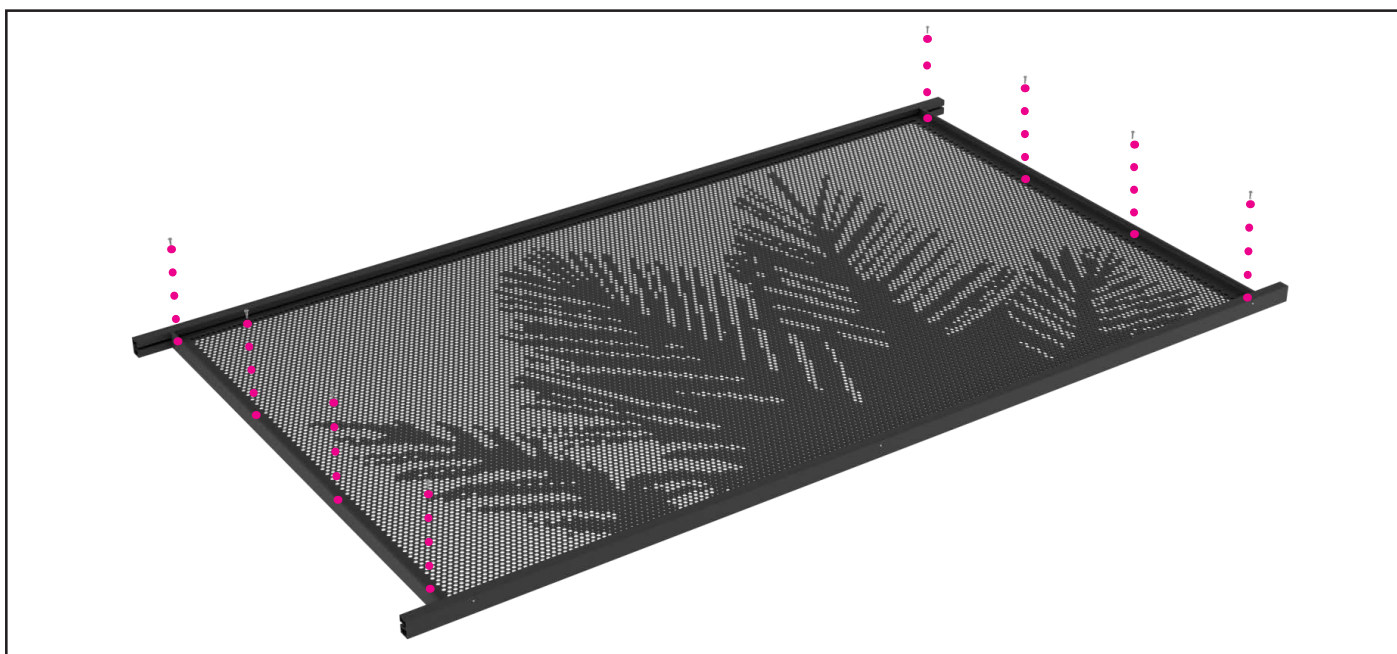
- 2 Place panel in frame rebate, ensuring panel is tight against rail rib on all 4 sides. Check measure top and bottom rail overhang to be equal on both sides and check square.



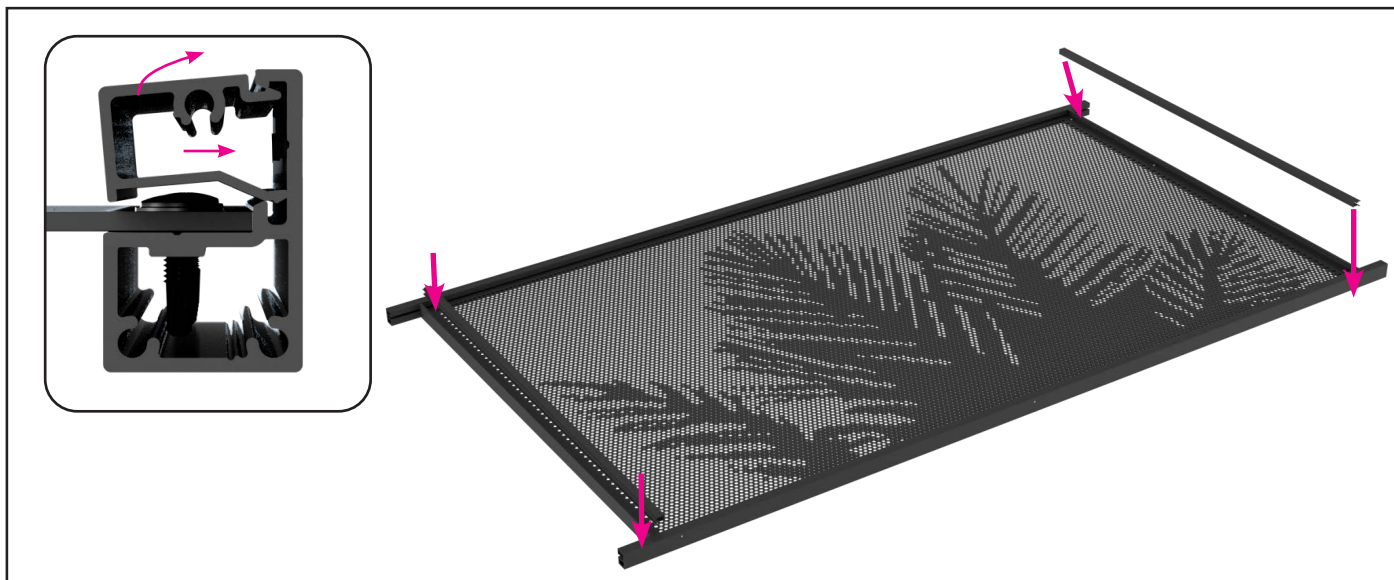
- 3 Drill 3mm pilot holes into the top and bottom outer frame rebate, aligning with the pre-punched holes in the panel border. Start with the 4 outer holes and affix with self tapping wafer screws and check for squareness. Adjust as necessary before drilling and screwing the remaining holes.



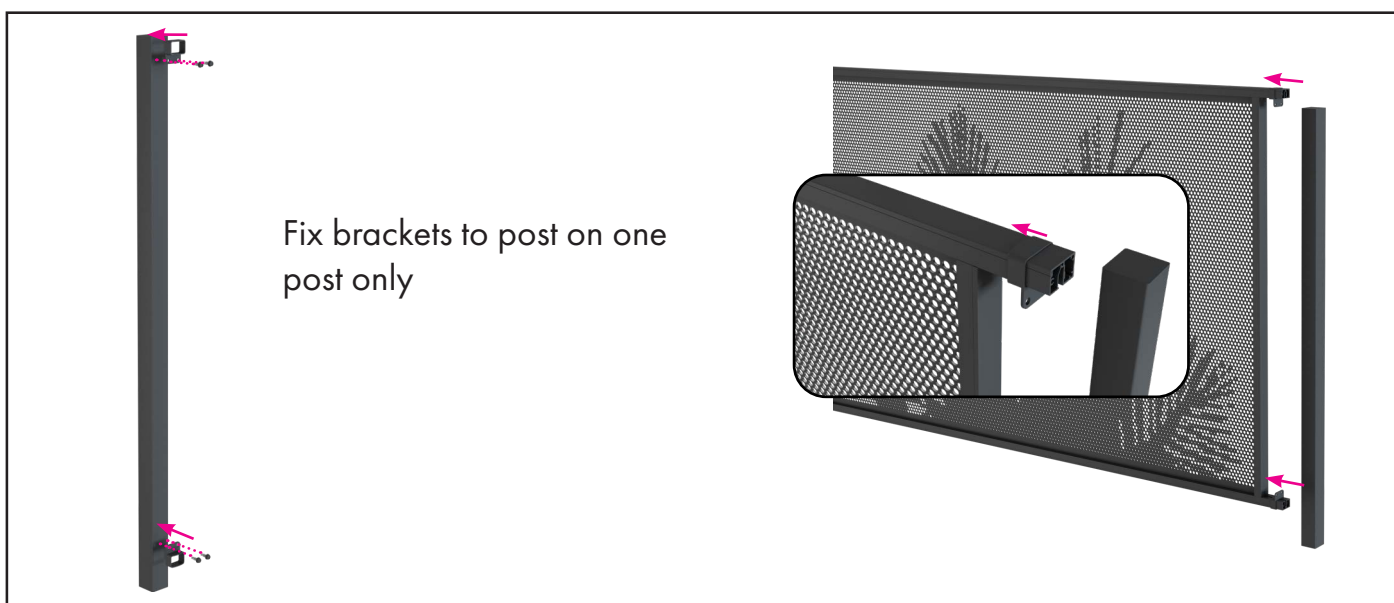
- 4** Remove the side rails from panel temporarily and affix clip bead to top and bottom rail. Return side rails into position and ensure panel is tight against rail ribs (both sides).



- 5** Drill 3mm pilot holes and affix panel to side rails with self tapping wafer head screws using pre-punched fixing holes. Check panel is square before and after tightening. Adjust as necessary.

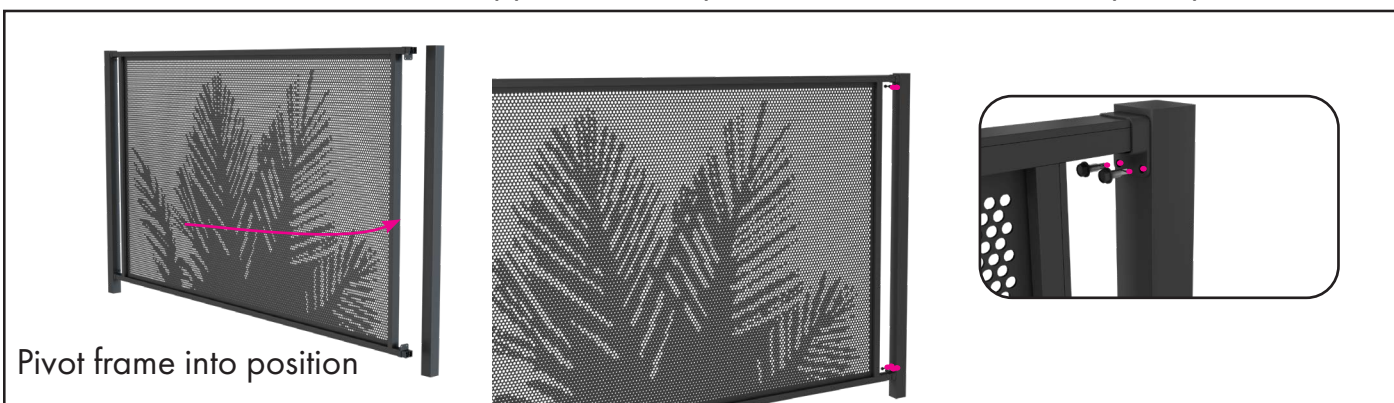


6 Affix clip bead to side rails



7 Affix brackets to 1 post (top and bottom) with suitable fixings at the distance of the top and bottom rails of the completed panel, considering the gap between bottom rail and finished ground level.

Slide loose brackets onto opposite side top and bottom rail of the complete panel.



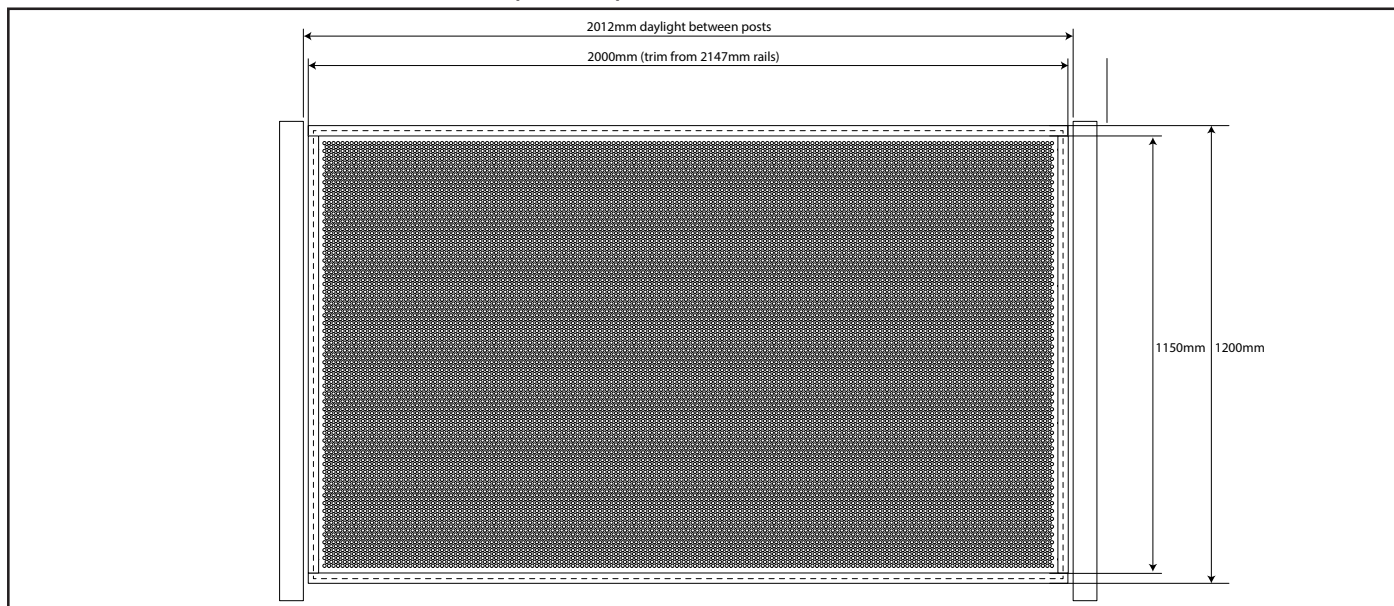
8 Insert rail into fixed brackets and pivot panel into position.

Secure loose brackets onto post and panel with suitable fixings.

METHOD 2

Premium Perf Pool Barrier Installation - Channel Fit

Based on completed panel size 1200mm H x 2000mm W



NOTE

Assembled panels are standard at 2000mm wide x 1200mm high

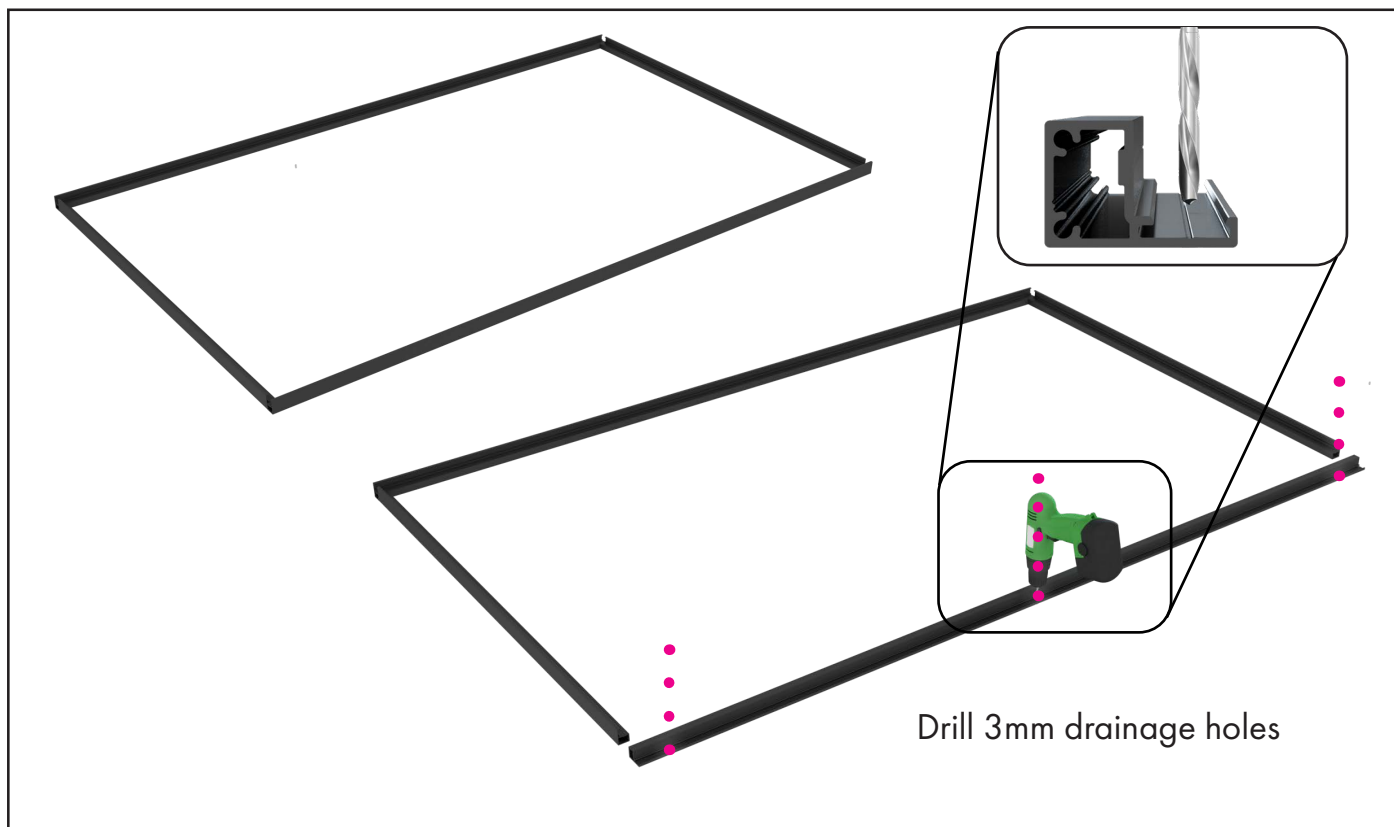
As standard, horizontal rails are supplied at 2147mm

For U Channel Installations, cut horizontal rails to 2000mm wide

As standard, vertical panels stiles are supplied at 1149mm long

'Daylight' between posts for standard installation is 2012mm.

For height and width adjustment, refer Appendix 1.

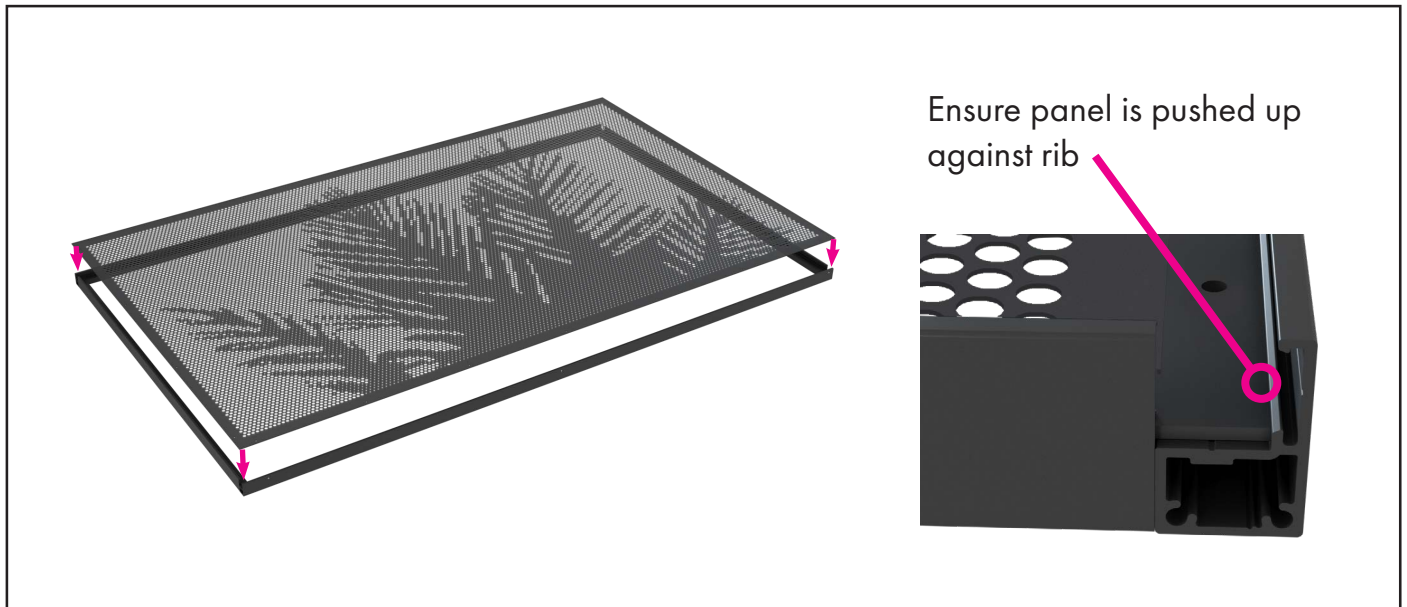


Drill 3mm drainage holes

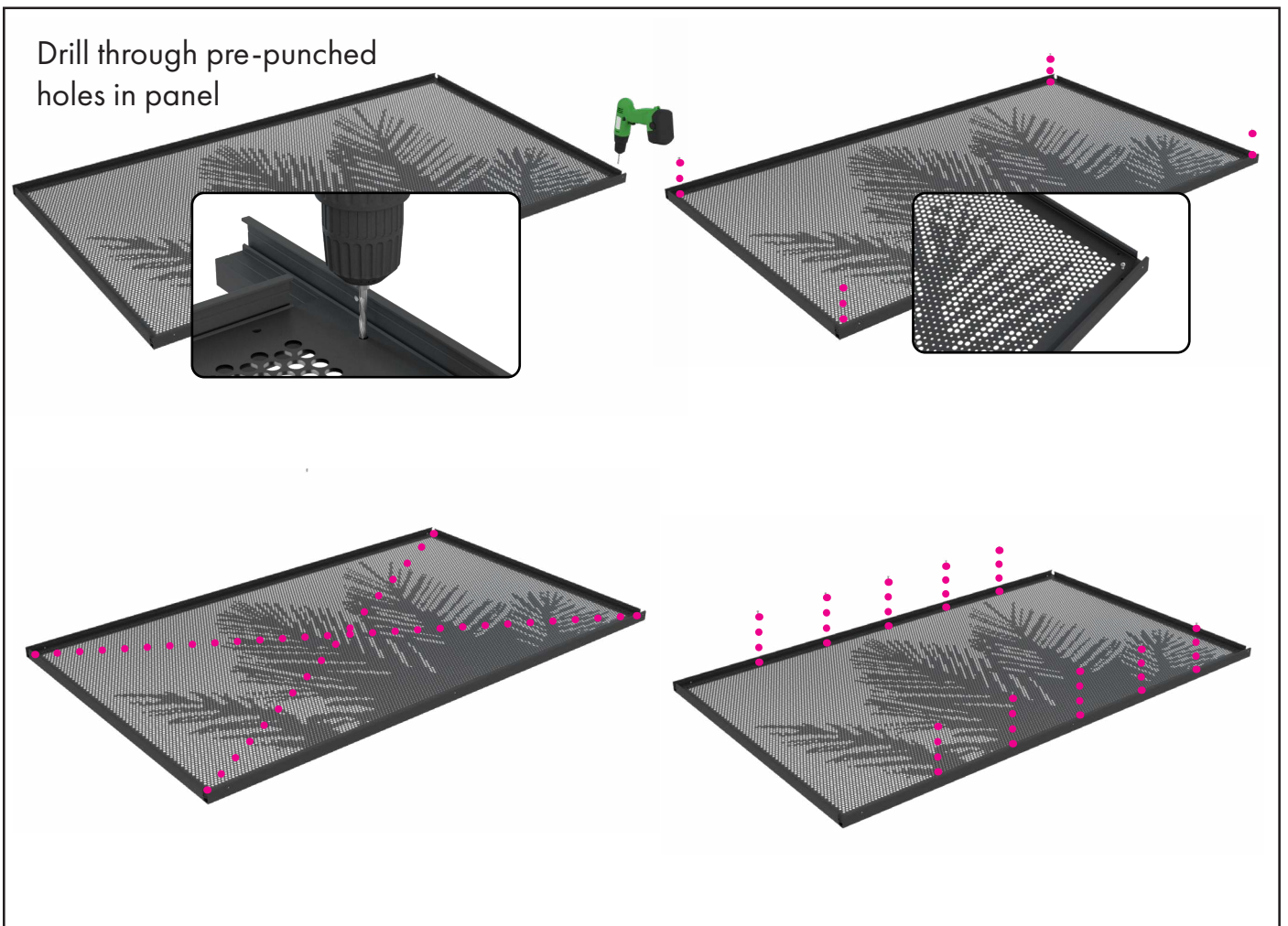
1

Lay out rails in picture frame (side rails inside top/bottom rails).

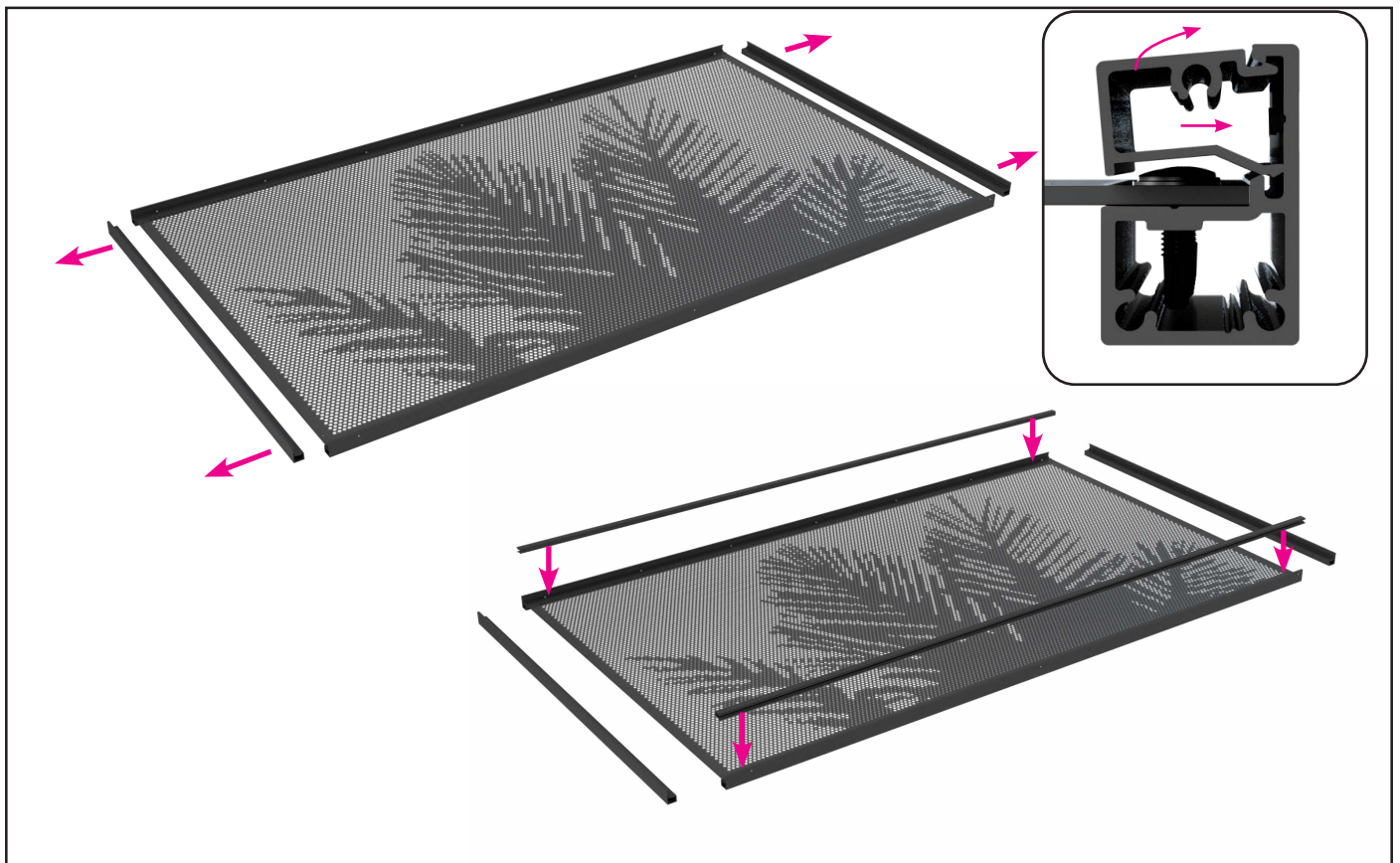
Drill 3mm drainage holes in bottom rail at 2 ends and midpoint



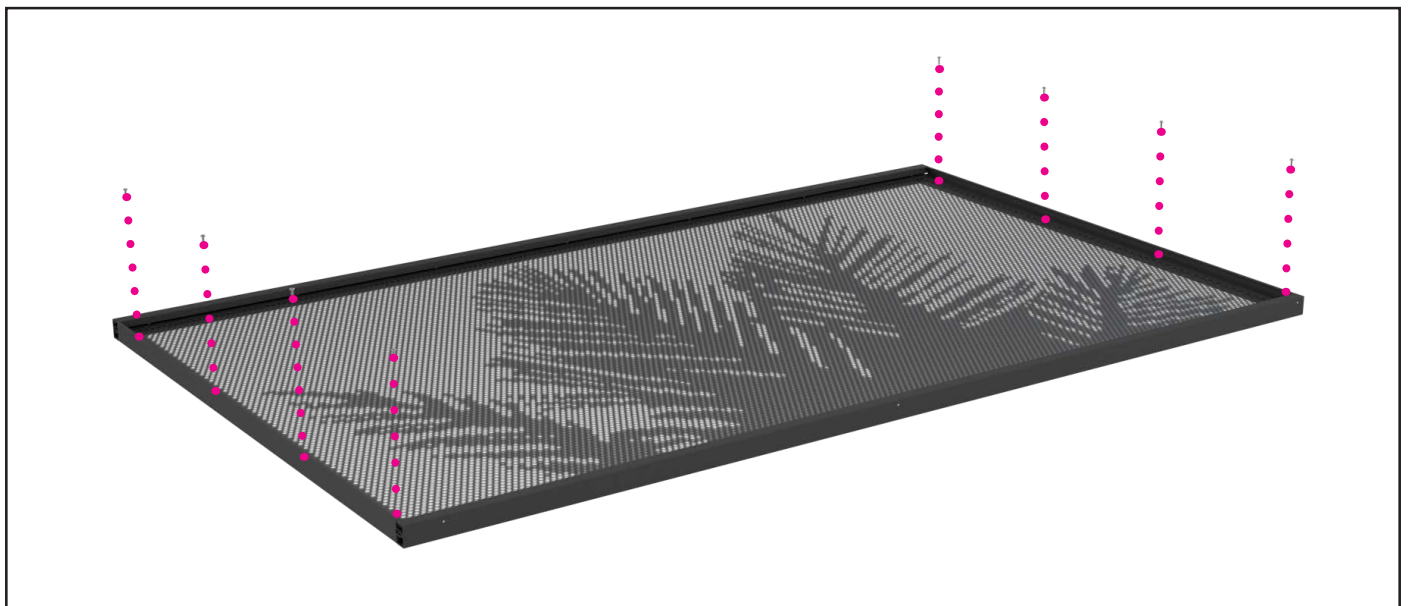
- 2 Place panel in frame rebate, ensuring panel is tight against rail rib on all 4 sides. Check square.



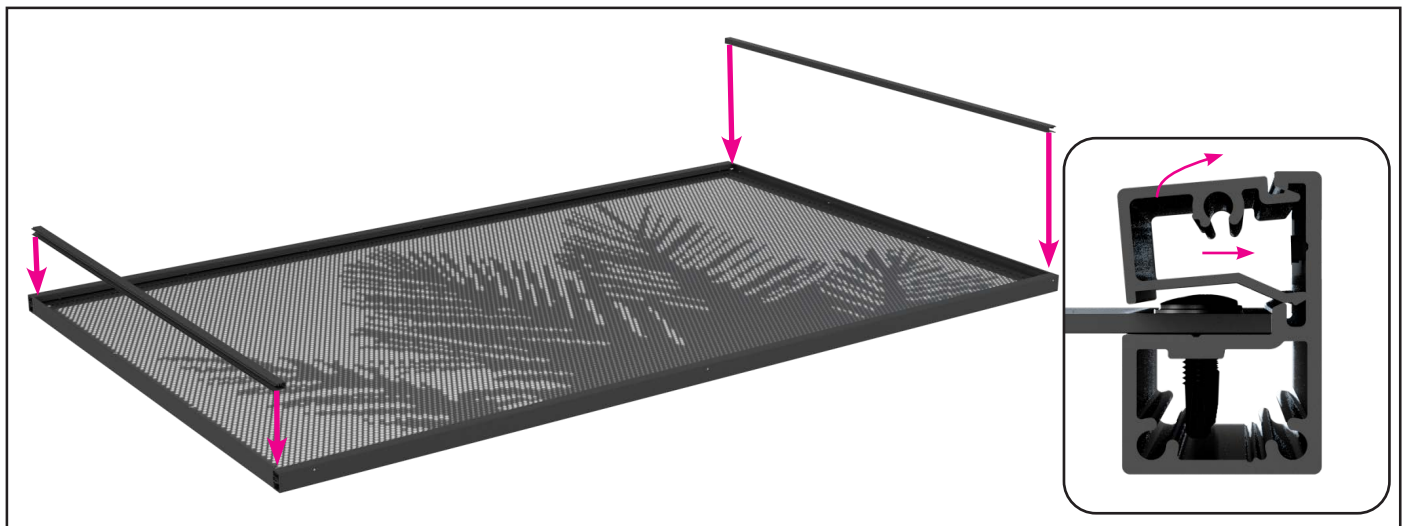
- 3 Drill 3mm pilot holes into the top and bottom outer frame rebate, aligning with the pre-punched holes in the panel border. Start with the 4 outer holes and affix with self tapping wafer screws and check for squareness. Adjust as necessary before drilling and screwing the remaining holes.



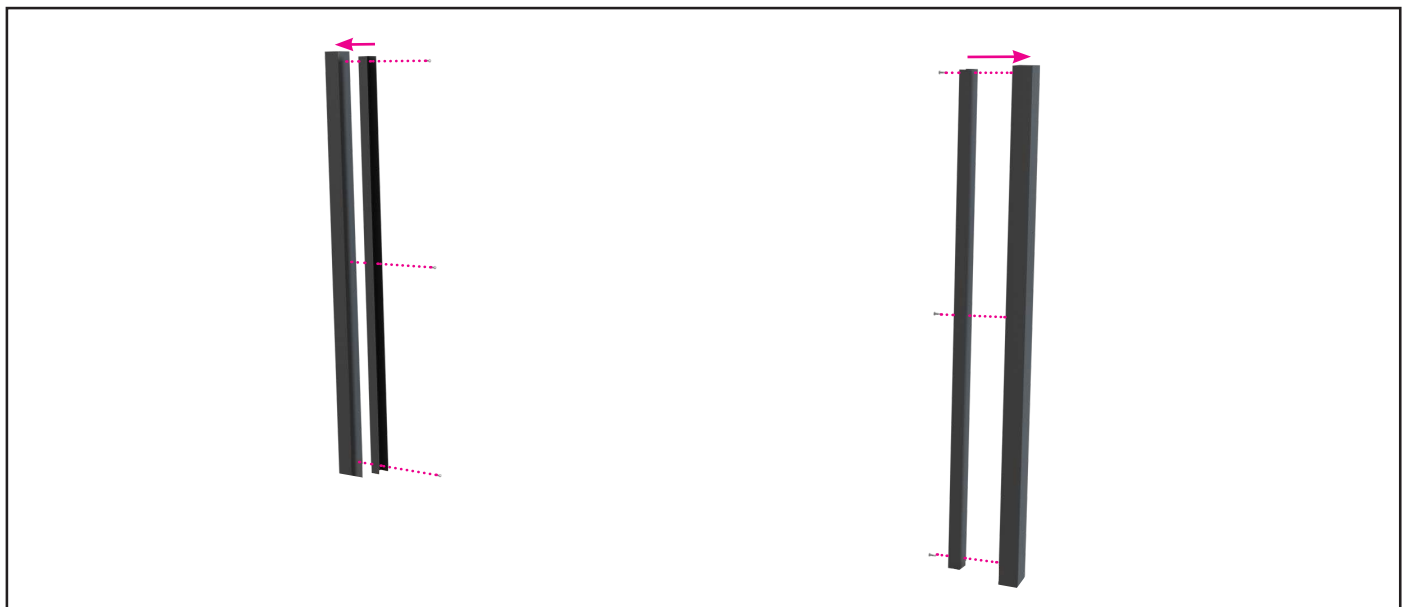
- 4 Remove the side rails from panel temporarily and affix clip bead to top and bottom rail. Return side rails into position and ensure panel is tight against rail ribs (both sides).



- 5 Drill 3mm pilot holes and affix panel to side rails with self tapping wafer head screws using pre-punched fixing holes. Check panel is square before and after tightening. Adjust as necessary.



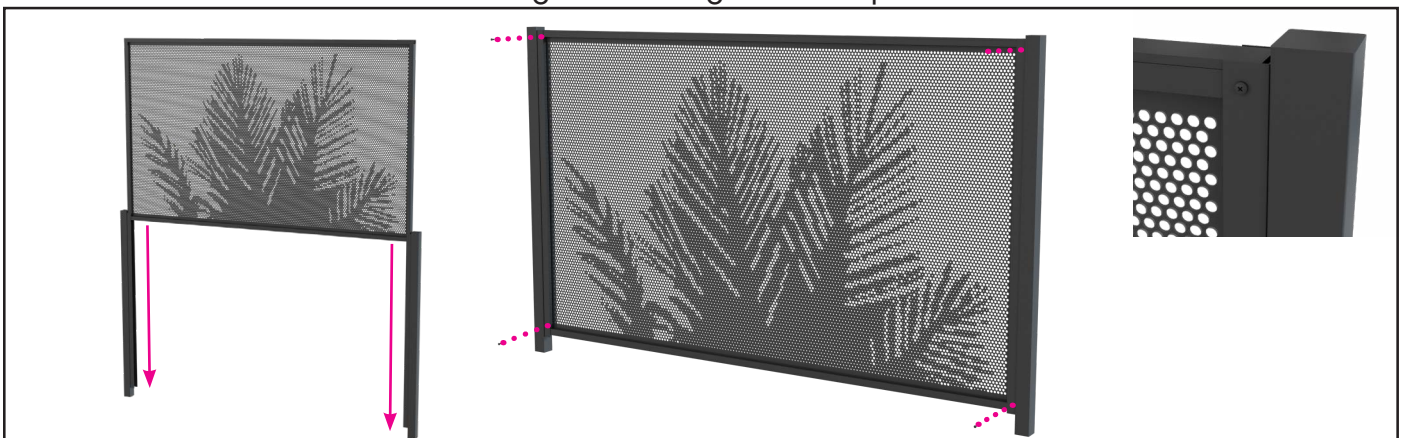
6 Affix clip bead to side rails



7 Screw fix U-Channel to aluminium posts using self tapping wafer head screws, considering the gap between the bottom rail and the finished ground level.

Fix off vertical U channel to posts at 3 points - bottom, middle and top.

NOTE: Allow for suitable fixings if installing to varied post materials.



8 Lower panel into U Channel and fix off using wafer head screws in each corner of the completed panel

APPENDIX 1

PANEL SIZE ADJUSTMENT

WIDTH AND HEIGHT ADJUSTMENT FOR OUTER FRAME

METHOD 1: Bracket Installation

2 x Horizontal Top/Bottom Rails = distance between posts - 3mm

2 x Vertical side frames = Outer frame height of panel - 51mm

** for WIDTH adjustment, suggested minimum gap between vertical side stile and post is 35mm which provides necessary gap for installation with brackets.

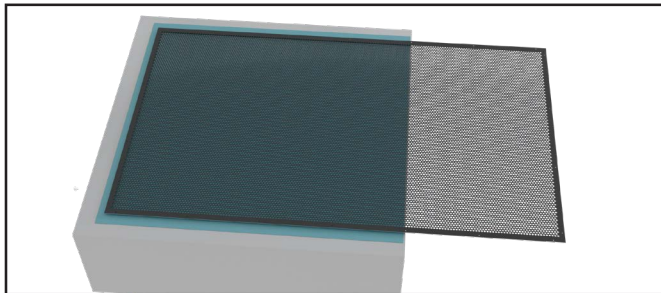
METHOD 2: U Channel Installation

2 x Horizontal Top/Bottom Rails = distance between post - 12mm

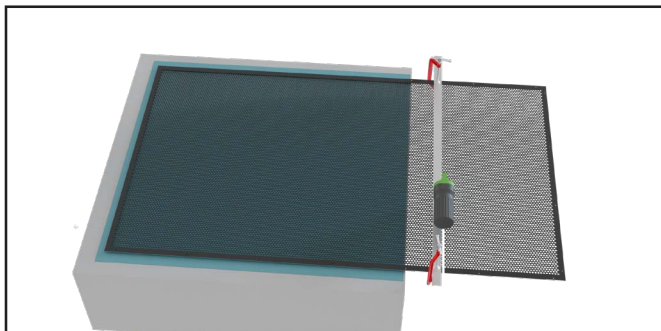
2 x Vertical side frames = Outer frame height of panel - 51mm

2 x Vertical U Channels = Outer frame height of panel

**For Width, allowance of length of panel + 12mm between posts is for fixings and channel



- 1 Lay the panel on flat, padded surface, overhanging the off-cut.
Deduction = Overall finished outer-frame size minus 12mm.



- 2 Using a clamped straight-edge as a guide, cut using a Nibbler tool.
Once cut, file any sharp or protruding edges.
Tip: For best visual appearance, remove both borders if sizing permits.

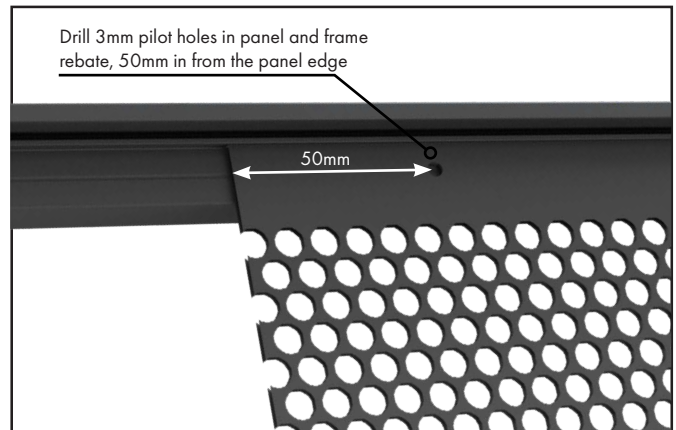
See Steps 1-6 of Bracket or U Channel Assembly Guide, incorporating steps 4 & 5 below.

- 3 Assemble outer frame to panel as per steps 1 to 6 (bracket or U Channel methods).

FABRICATION

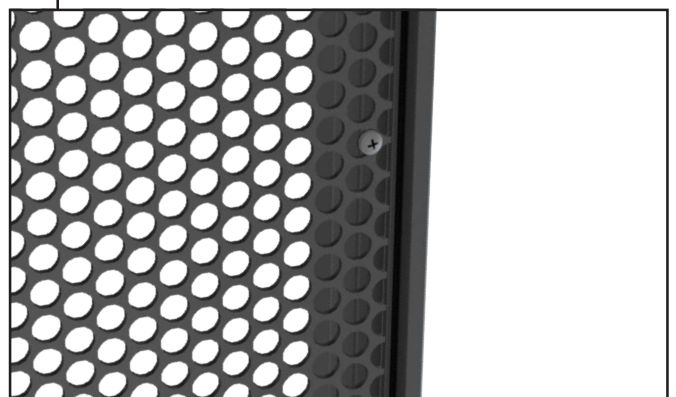
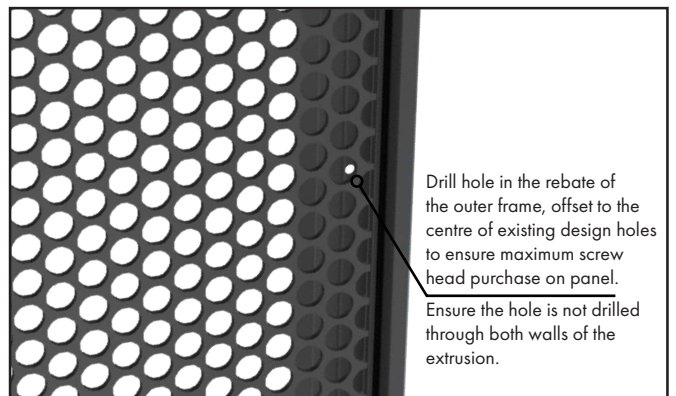
OVERVIEW

Horizontal rails:



- 4 The fixing holes in the adjacent border to the cut edge may have been removed during cut-down.
Drill 3mm pilot holes for fixing approximately 50mm in from each corner.
Affix using self tapping wafer head screws.

Vertical rails:



- 5 The border and pre-existing fixing holes will be removed when adjusting the panel size.
Drill 3mm pilot holes in the rebate of the outer frame, positioning holes off-set to the centre of the existing design holes, ensuring screw head has maximum purchase on the panel.
Holes to be approximately 50mm from each corner and 400mm apart.

APPENDIX 2

PREMIUM PERF GATES

GATE HARDWARE

OVERVIEW

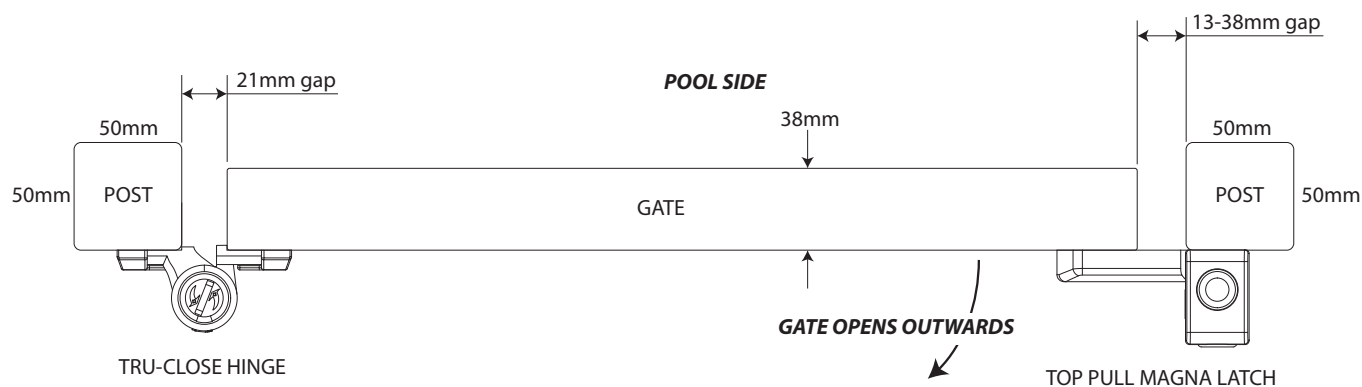
OPTION 1



Tru Close Hinges



Top Pull Magna Latch



APPENDIX 2 (CONT.) PREMIUM PERF GATES

GATE HARDWARE OVERVIEW

OPTION 2



Tru Close Hinges



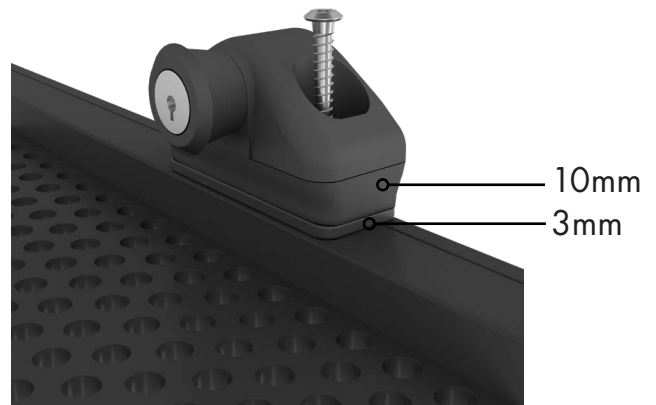
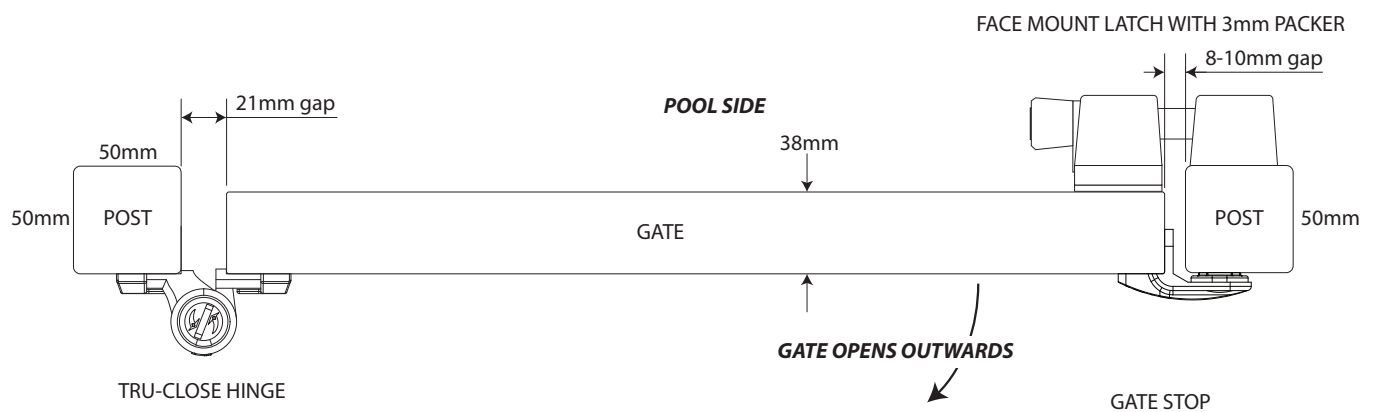
Face Mount Lockable Latch



3mm packer kit with 2 x
35mm screws



Gate Stop



NOTE: Drill two 4mm holes to attach the face mount latch ensuring all internal aluminium walls are drilled without piercing the opposite final wall of the gate frame.

Selecting a low screw setting of a cordless drill, affix the two stainless steel 35mm screws supplied in the packer kit to attach the face mount latch, 10mm latch packer and 3mm packer to the gate frame.