

A modern outdoor pool area featuring a glass railing system. The railing is made of clear glass panels held by white spigots. In the foreground, there are concrete steps leading down to the pool. The pool water is a vibrant turquoise color. The background shows a modern building with large windows and palm trees. The overall scene is bright and clean, with a focus on the glass railing system.

INSULUXE® SPIGOTS

YOUR TRADE PARTNER / INNOVATION, QUALITY, SERVICE
WHOLESALE & TRADE ONLY

INSULUXE®

Introducing Insuluxe® – our latest innovation in pool fencing! The Insuluxe® spigot is a fully insulated solution that brings both style and safety to pool areas. Designed for longevity, these spigots feature a tough, scratch-resistant surface and a unique injection-moulded design that bonds the insulation material securely to the stainless steel 2205 spigot. The Insuluxe® spigot not only enhances the aesthetic appeal of your pool fence but also provides peace of mind with its advanced safety features. Choose Insuluxe® for a pool fencing solution that combines cutting-edge technology with sleek, modern design.



Overmoulding

Overmoulding is a process that bonds a layer of material over an existing part, enhancing durability, function, and aesthetics.

Unlike coatings, overmoulded layers are injected and securely bonded, making them more resistant to wear and separation.

BENEFITS

- ✓ **Longer Lasting:** Overmoulded layers don't chip or peel, ensuring reliable protection over time.
- ✓ **Superior Bonding:** The layer is integrated into the part, staying secure under stress and frequent use.
- ✓ **Consistent Quality:** Overmoulding provides an even, premium finish without uneven wear.

INSULUXE®

Insuluxe® –

Core drill insulated spigot

Silver gloss, matt black or matt white finish

Order Code: **INS-S-SG (Silver Gloss)** *coming soon*

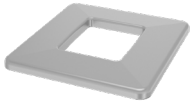
INS-S-B (Matt Black)

INS-S-W (Matt White)

- High-technology insulated pool fencing spigot
- Durable insulating barrier precisely formed over premium SS2205 stainless steel
- Sleek 47mm front profile
- Tapered, anti-toe-hold top design
- Compatible with frameless glass 12mm toughened panels
- Dress ring sold separately



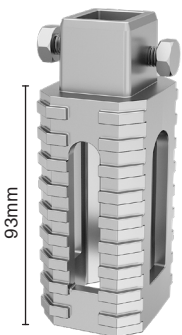
Optional extras



Dress ring

105mm x 109mm outer
Silver gloss, matt black or matt white finish

Order Code: **INS-DR-SG**
INS-DR-B
INS-DR-W

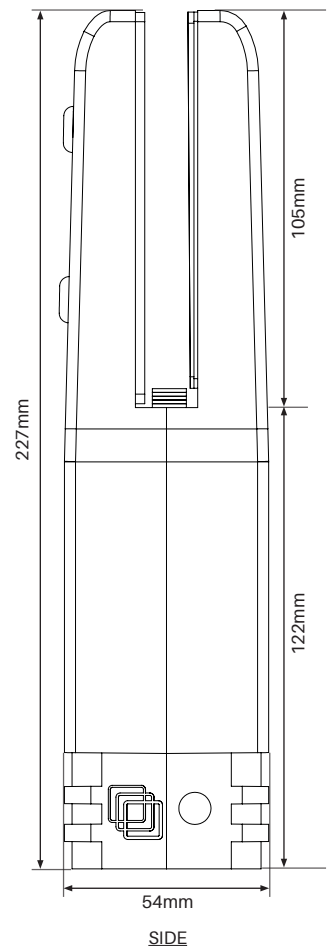
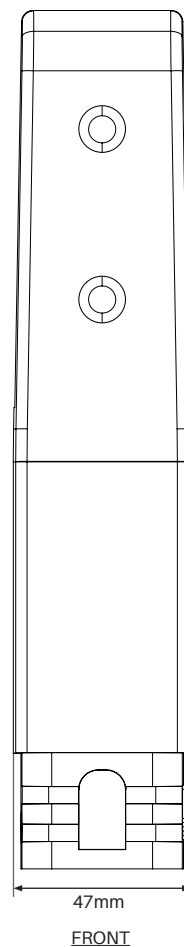


Spigot extender

93mm extender
SS2205

Order Code: **INS-XT**

- Bolts to bottom of core drill spigot if extra embedment is required



Insuluxe® –

Base plated insulated spigot

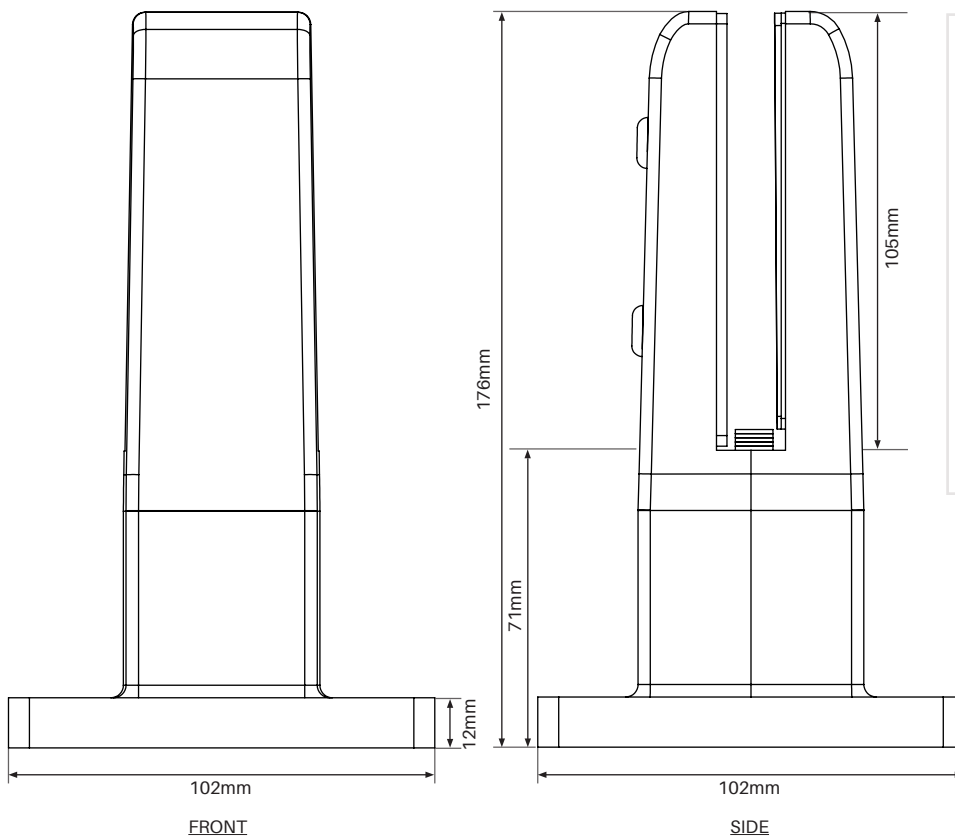
Silver gloss, matt black or matt white finish

Order Code: **INS-SBP-SG (Silver Gloss)** *coming soon*

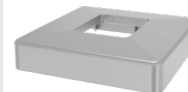
INS-SBP-B (Matt Black)

INS-SBP-W (Matt White)

- High-technology insulated pool fencing spigot
- Durable insulating barrier precisely formed over premium SS2205 stainless steel
- Sleek 47mm front profile
- Features 102x102mm base plate
- Tapered, anti-toe-hold top design
- Compatible with frameless glass 12mm toughened panels
- 4 x countersunk holes to suit M10 fixings
- Domical cover sold separately



Optional extras



High domical cover

26mm high

Silver gloss, matt black or matt white finish

Order Code: **INS-HDC-SG**

INS-HDC-B

INS-HDC-W

- 2 part cover
- Clip together after fixing down of spigot